

AuScope

AN ORGANISATION FOR A NATIONAL
EARTH SCIENCE INFRASTRUCTURE PROGRAM



Government of **Western Australia**
Department of **Mines and Petroleum**

National Virtual Core Library - GSWA Node

The AuScope **National Virtual Core Library (NVCL)** will facilitate research into the composition of the top 2 km of the Australian continent by hyperspectrally scanning the millions of metres of drill core archived in Federal, State and Territory Geological Surveys. These will be augmented by cores offered by the private sector.

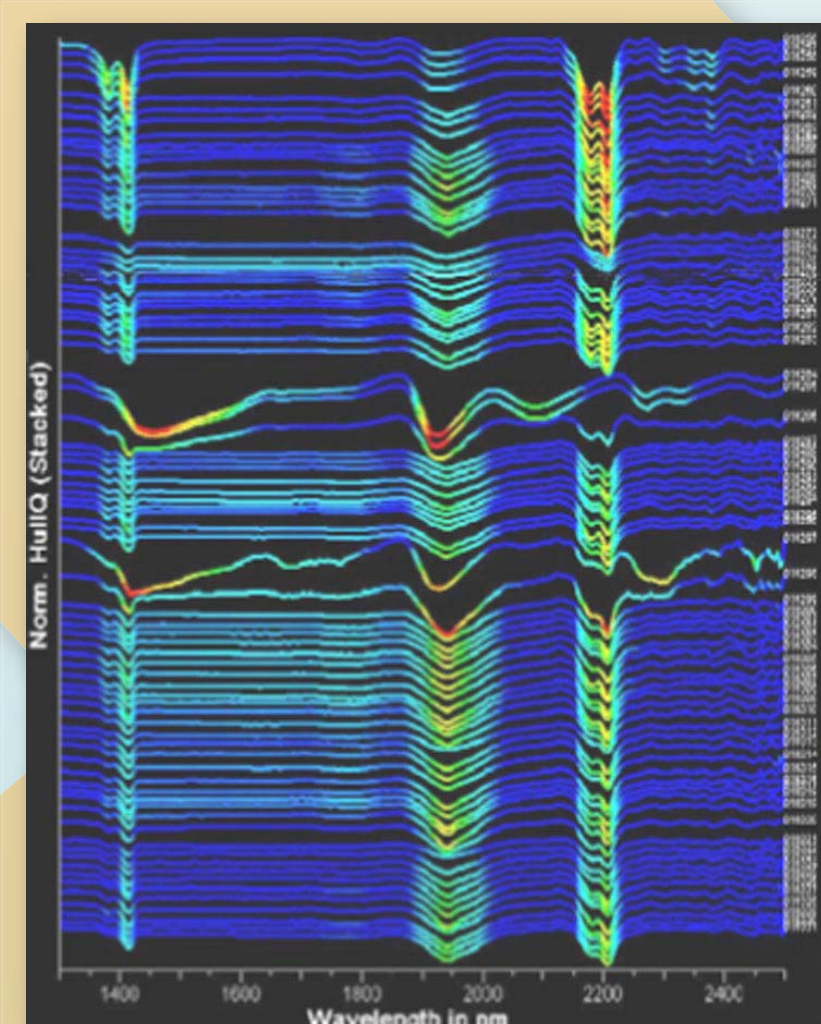


Joe Lord Core Library,
Kalgoorlie

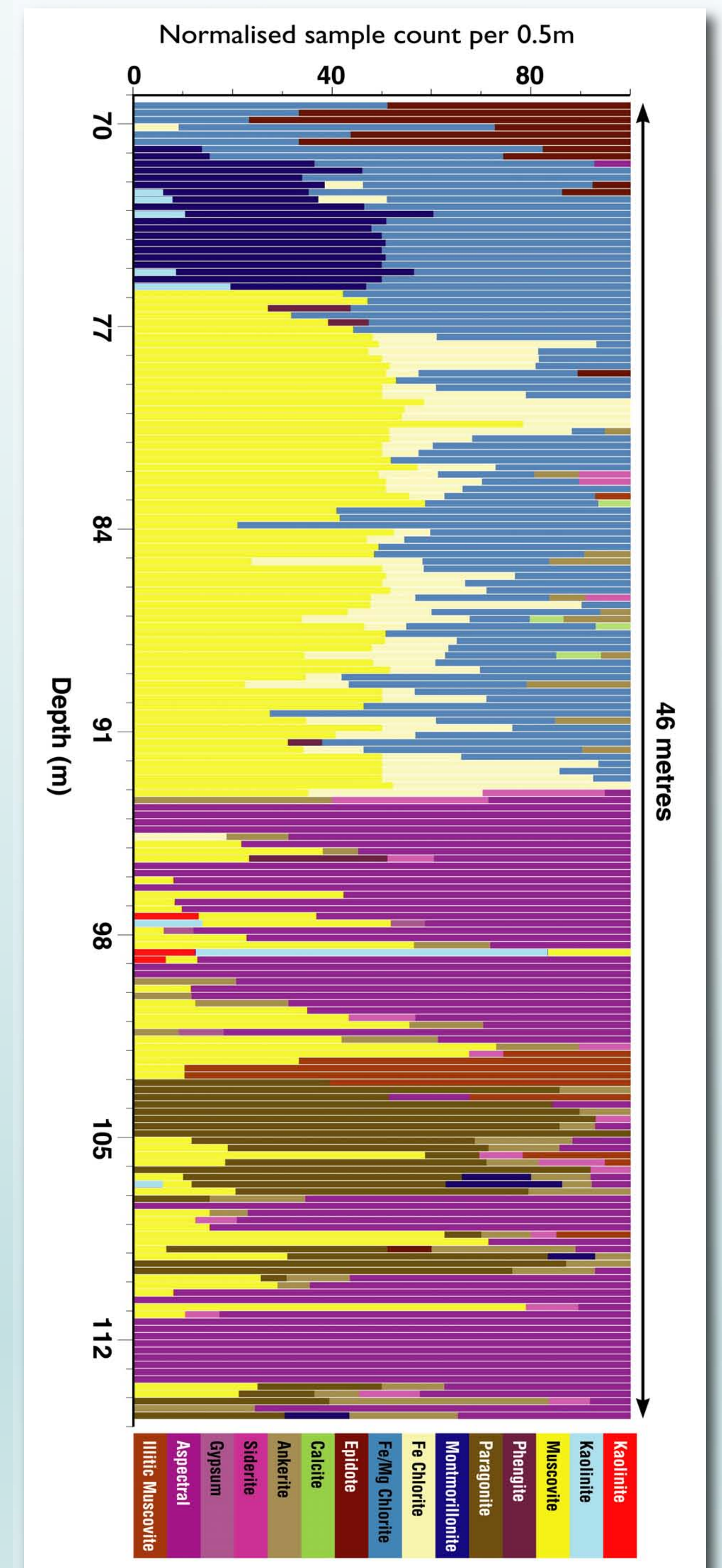
The AuScope NVCL is a unique new collaborative research infrastructure project funded by the federal government's National Collaborative Research Infrastructure Strategy (NCRIS) within the Department of Innovation Industry Science and Research, and the CSIRO, and implemented by all State and Territory Geological Surveys.



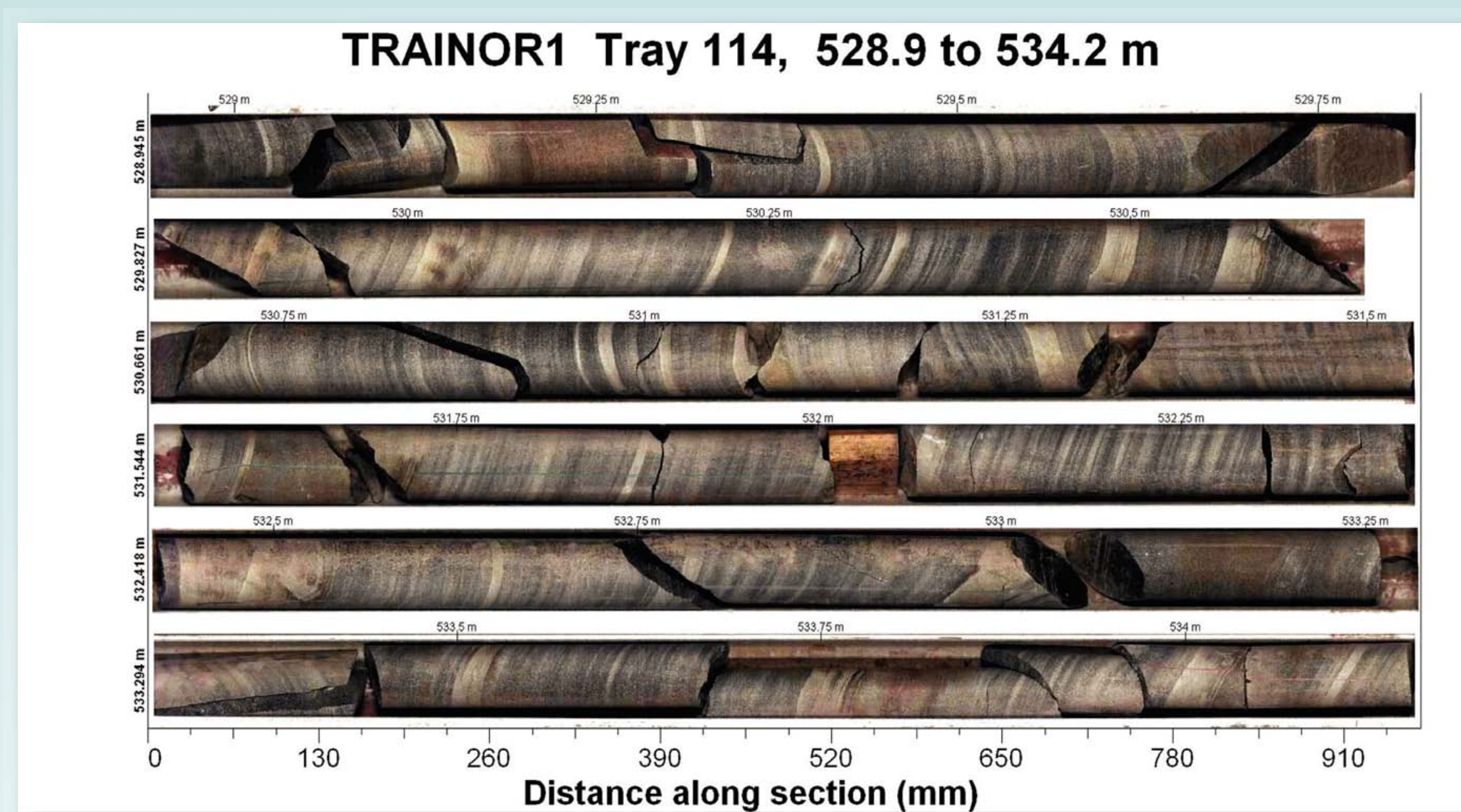
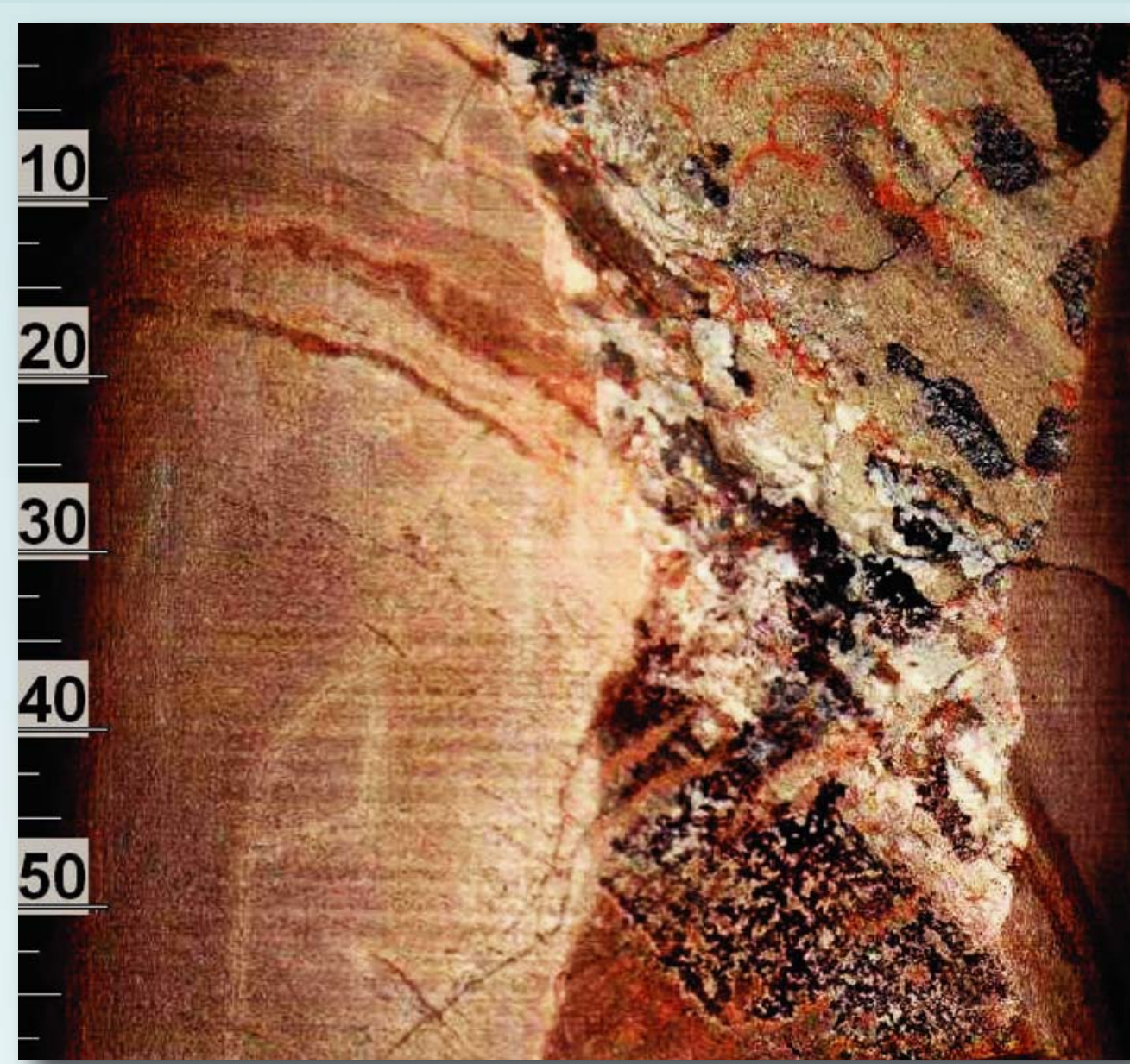
During the current AuScope project (out to mid-2011), each Geological Survey will staff and operate one of CSIRO's HyLogging™ hyperspectral mineralogical core logging instruments. These instruments yield information-rich spectro-mineralogical and image data of cores at a spatial resolution of approximately 10mm.



The data will be interpreted in the TSG-Core™ software package and along with standard products stored in relational databases for global interrogation via the Internet.



North Pole Dome PDP2C



Typical outputs will include mineralogical logs (right) supplemented by detailed spatially-registered images of the core (far left), and core trays (left), in this case also showing in red the distribution of the mineral prehnite.

An interactive demonstration website is available for preview at <http://nvcl.csiro.au>. The AuScope Discovery Portal is also under development and may be previewed at <http://portal.auscope.org/gmap.html>. Use of the NVCL infrastructure for research opportunities is strongly encouraged. For more information contact Lena Hancock, GSWA NVCL Project Geologist, lena.hancock@dmp.wa.gov.au or the AuScope NVCL Component Director, Jon Huntington, jon.huntington@csiro.au.

AuScope Limited
School of Earth Sciences
University of Melbourne
Victoria 3010
Tel 03 8344 8351
Fax 038344 8359
info@auscope.org
ABN 33 125 908 376
www.auscope.org.au



Mineral Resources Tasmania
Department of Infrastructure, Energy and Resources



Australian Government
Department of Innovation
Industry, Science and Research



Acknowledgements

GSWA NVCL

Paul Morris - Project Leader
paul.morris@dmp.wa.gov.au
Gary Williams - Administrator
gary.williams@dmp.wa.gov.au
Lena Hancock - Geologist
Lena.Hancock@dmp.wa.gov.au
Ph: +61 8 9470 0307
Fax: +61 8 9470 0350